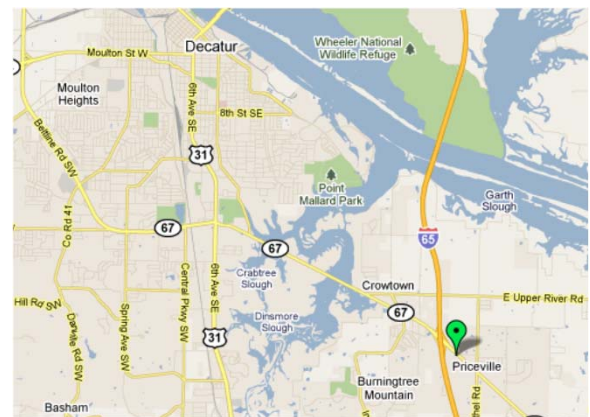




PROPERTY DESCRIPTION

1.476 acre site at the southeast corner of Highway 67 & Pleasant Acres Road ¼ mile east of I-65. The property is adjacent to a RaceWay convenience store.

- LOCATION: SEC of Highway 67 & Pleasant Acres Road
- SIZE: 1.476 acres
- ZONING: C-3, Highway Commercial (City of Priceville)
- UTILITIES: Utilities available to site
- TRAFFIC COUNTS: 16,140 AADT (2016)
- ACCESS: Shared Access with RaceWay
- POPULATION: One mile: 1,017
Three miles: 5,711
Five miles: 18,580



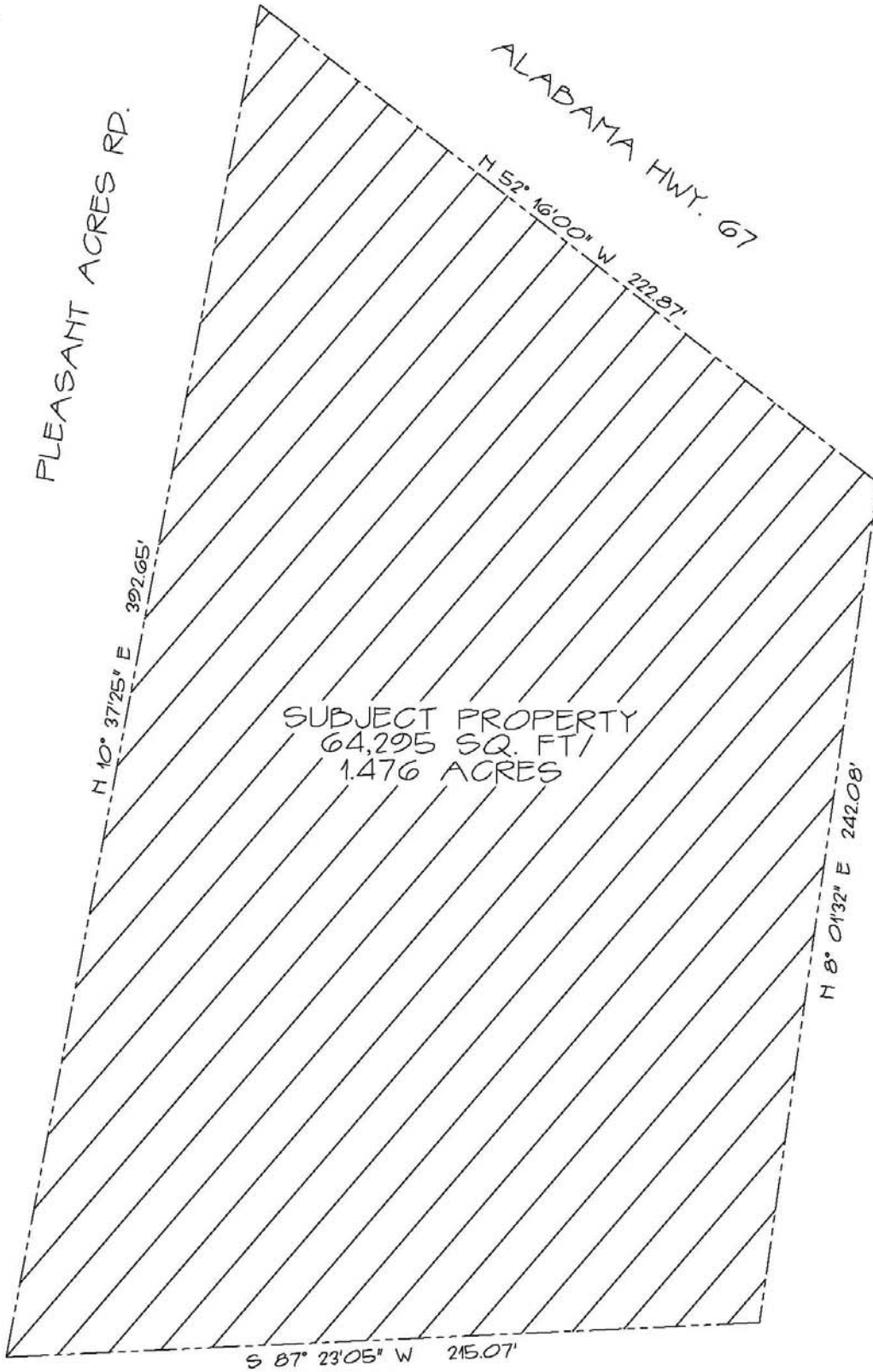
200 Galleria Parkway,
Atlanta GA 30339
(800) 388-8035 x1112

racetracrealstate@racetrac.com
racetracrealstate.com



PLEASANT ACRES RD.

ALABAMA HWY. 67



SUBJECT PROPERTY
64,295 SQ. FT.
1.476 ACRES

THE INFORMATION SET FORTH IS BELIEVED TO BE ACCURATE, BUT MAY CONTAIN ERRORS AND OMISSIONS. RACETRAC PETROLEUM, INC. DISCLAIMS ALL REPRESENTATIONS AND WARRANTIES WITH RESPECT THERTO.